



2022-2023

# Back to School Drive



Friends of  
**JOSHUA  
HOUSE**  
Foundation, Inc.

The goal of our Back-to-School Drive is to not only collect the tools our children need to be successful in school, but also to put them on a path to success in life. We will need backpacks, folders and all of the "usual" school supplies, but we also need funds for field trips, football games, homecoming and proms – and our Earn2Learn program.

The sad truth is that over 50% of foster children do not graduate high school. On average, foster teens are 2 years behind academically. We aim to change that here at Joshua House!

Our Earn2Learn program is a reward and award system designed to motivate our foster youth to stay in school and improve their grades. We use incentives to encourage them to attend school, work with tutors and increase their Grade Point Average — and it works!

Earn2Learn is not about providing cash for grades as the name implies. It is about teaching our children that their lives are enriched through education.

The new school year begins August 10th in Hillsborough County  
— AND WE NEED YOUR HELP!

## How can you help?

On the back of this flyer is a list of school supplies and clothing that are needed the most.

## Our Amazon Wish List:

[https://www.amazon.com/hz/wishlist/ls/12304R5PPDNCS?ref=wl\\_share](https://www.amazon.com/hz/wishlist/ls/12304R5PPDNCS?ref=wl_share)

## Want to help, BUT don't want to shop?

Make a donation to our Back to School Drive by scanning the QR code below:



or go to to this link:

[tinyurl.com/2022-BackToSchool](https://tinyurl.com/2022-BackToSchool)

**\$300** will buy school clothes, one pair of shoes and school supplies for one child.

**\$250** will buy school clothes and one pair of shoes for one child.

**\$50** will pay for a backpack and school supplies for one child.

Or host a Back-to-School Drive at your office or in your neighborhood!

Please deliver any donations by Wednesday, August 3, 2022 to one of our Drop-off Locations.

**PO Box 2451, Lutz, FL 33548 | [www.friendsofjoshuahouse.org](http://www.friendsofjoshuahouse.org) | (813) 406-5694**  
**For questions regarding the Back-to-School Drive: (813) 406-5694**

THANK YOU FOR SUPPORTING OUR CHILDREN!

FOJH, REGISTRATION #CH34145, IS REGISTERED WITH THE STATE UNDER THE SOLICITATION OF CONTRIBUTIONS ACT. A COPY OF THE OFFICIAL REGISTRATION AND FINANCIAL INFORMATION MAY BE OBTAINED FROM THE DIVISION OF CONSUMER SERVICES BY CALLING TOLL-FREE (800-435-7352) WITHIN THE STATE. APPROVAL DOES NOT IMPLY RECOMMENDATION

## DROP-OFF LOCATIONS:

### SCRAPORIUM

16518 N Florida Avenue  
Lutz, FL 33549  
(813) 269-7946  
M/W/F: 10am – 3pm  
T/R: 10am – 6pm  
Saturday: 10am – 5pm

### JOSHUA HOUSE DONATION CENTER

1515 Michelin Court  
Lutz, FL 33548  
M-F: 10am – 4pm or by  
appointment  
(813) 406-5694

### HAND & STONE MASSAGE AND FACIAL SPA

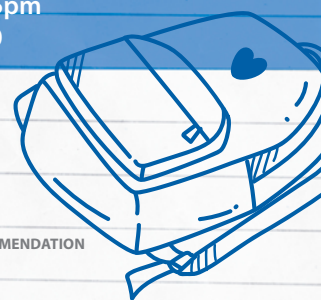
13129 North Dale Mabry  
Highway, Suite E  
Tampa, FL 33618  
M-F 9am – 10pm  
S/S 9am – 9pm  
(813) 425-1713

### HAND & STONE MASSAGE AND FACIAL SPA

1664 Bruce B Downs Boulevard  
Wesley Chapel, FL 33544  
M-F 9am – 10pm  
S/S 9am – 9pm  
(813) 229-8700

### MAGAZINE LAW GROUP

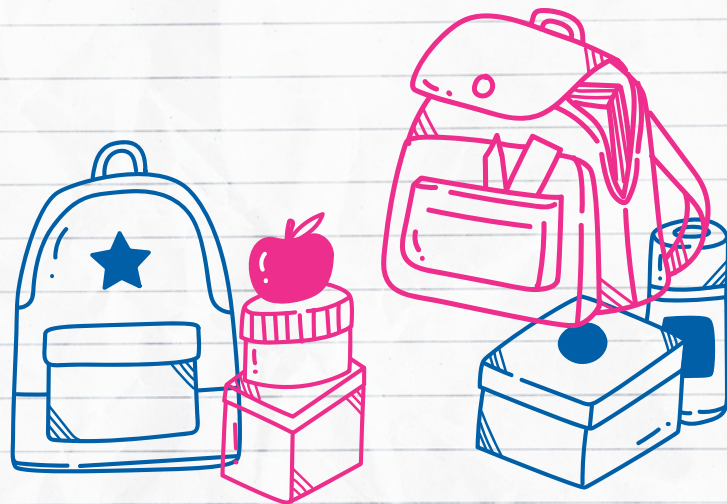
2625 McCormick Dr. #102  
Clearwater, FL 33759  
M-F 8:30am – 5pm  
(727) 744-2100





# SCHOOL SUPPLY LIST

- ★ Backpacks – large, sturdy backpacks for teens (*this is the most needed item*)
- 2-Pocket Folders with prongs – plastic – variety of colors: purple/red/yellow/green
- Spiral, 100 page notebooks: yellow/red/green/purple/blue/black
- White-out tape
- Mini Hand Sanitizers
- Scotch tape
- Thumb drives – Small GB
- Copy paper
- Ear buds (for test taking – not wireless)
- Dry Erase Markers
- Red, black & blue pens
- Sticky-Notes
- 3-ring binders - heavy duty – 1 1/2" & 2" – white with clear pocket front
- 3-ring pencil pouches
- Highlighters – variety of colors
- Markers – Crayola preferred
- Calculators
- Pre-sharpened pencils
- Colored Pencils – 12 packs
- Filler Paper/Graph Paper
- Glue sticks
- Kid Scissors
- Index Cards



## PERSONAL UNDERCLOTHES FOR TEENS:

### GIRLS:

- Junior and ladies sized bikini, hipster or boy brief style underwear S-XL
- Bras –larger sizes most needed
- Sports bras S-XL
- Socks – ladies sizes, any color or style

### BOYS:

- Boxer briefs, men sizes from S-XL and boys sizes M, L & XL
- Black socks in men's sizes – any style – Nike or Adidas preferred



## GIFT CARDS FOR TEENS TO SHOP!

Gift cards help these teens make personal choices about their wardrobe. Gift cards for Ross, Marshalls, TJ Maxx or area malls are a huge help!



[FRIENDSOFJOSHUAHOUSE.ORG](http://FRIENDSOFJOSHUAHOUSE.ORG)