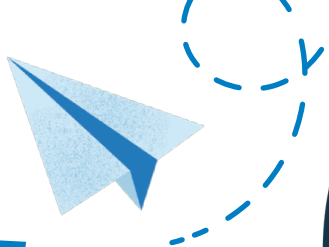


2025-2026 Back-to-School Drive



Our Back-to-School Drive isn't just about collecting school supplies, it's about **equipping our children for success in school and beyond**. While backpacks, folders, and other essentials are crucial, we also need funds for field trips, football games, homecoming, prom, and our educational programs.

The reality is heartbreaking: more than 50% of foster children do not graduate high school, and on average, foster teens are two years behind academically. At Joshua House, we are committed to changing that!

Our educational programs are used to motivate, encourage, and support our foster youth to stay in school and improve their grades. By rewarding attendance, increasing tutoring participation, and encouraging academic progress, we help them build confidence and a brighter future.

The new school year starts **August 11th** in Hillsborough County, and we need your support to give these children the opportunities they deserve. Join us in making a difference!

HOW CAN YOU HELP?

Check the back of this flyer for a list of the most needed school supplies and clothing items



Our Amazon Wish List includes items for Back-to-School for those who like to click and ship!

<https://www.amazon.com/registries/gl/guest-view/2E39T3OFR27K3>



Shop for specific children's clothing & backpack requests using this link.

<https://www.signupgenius.com/go/60B0845ABA82D6-55629232-2025#/>



Want to help but prefer not to shop?
Consider making a donation instead!

<https://www.friendsofjoshuahouse.org/>

Host a Back-to-School Drive at your office or in your neighborhood!

YOUR GIFT MAKES A DIFFERENCE!

\$300 provides a child with school clothes, a pair of shoes, and essential school supplies.

\$250 outfits a child with school clothes and a new pair of shoes.

\$50 supplies a child with a backpack filled with school essentials.

DROP OFF LOCATIONS:

Floridacentral Credit Union

<https://www.floridacentralcu.com>
All Hillsborough, Pinellas, and Pasco
Branch Locations

Hand and Stone Massage and Facial Spa

13129 North Dale Mabry Highway Suite E
Tampa, FL 33618
M-F 9am – 10pm
S/S 9am – 9pm
(813) 425-1713

Hand and Stone Massage and Facial Spa

1664 Bruce B Downs Boulevard
Wesley Chapel, FL 33544
M-F 9am – 10pm
S/S 9am – 9pm
(813) 229-8700

Hand and Stone Massage and Facial Spa

12865 Citrus Plaza Drive
Tampa, FL 33625
M-F 9am – 10pm
S/S 9am – 9pm
813-592-0010

Scraporium

16518 N Florida Avenue
Lutz, FL 33549
(813) 269-7946
M/W/F: 10am – 3pm
T/R: 10am – 6pm
Saturday: 10am – 5pm

Joshua House Donation Center

1515 Michelin Court
Lutz, FL 33548
M-F: 10am – 4pm or by appointment
(813) 406-5694



Please deliver any
donations by Monday,
August 4th, 2025 to one of
our Drop-Off Locations.

School Supply List

- ★ Backpacks – large, sturdy backpacks for teens (this is the most needed item)
- 2-Pocket Folders with prongs – plastic – variety of colors: purple/red/yellow/green
- Spiral, 100-page notebooks: Yellow/red/green/purple/blue/black (wide and college ruled needed)
- 3 and 5-subject Spiral Notebooks – all colors
- White-out tape
- Scotch tape
- Thumb drives – Small GB
- Copy paper
- Ear buds (for test taking – not wireless)
- Dry Erase Markers
- Red, black & blue pens
- Sticky-Notes
- 3-ring binders - heavy duty – 1 1/2" & 2" – white with clear pocket front
- 3-ring pencil pouches
- Highlighters – variety of colors
- Markers - Crayola preferred
- Calculators, large size
- Pre-sharpened pencils
- Colored pencils – 12 packs
- Filler paper – wide & college Ruled
- Glue sticks
- Index Cards

PERSONAL UNDERCLOTHES FOR TEENS:

GIRLS

- Bikini, hipster or boyshorts styles - Junior or Ladie's sizes S - XL
- Bras/Sports Bras - See Amazon Wish List for specific needs
- Socks - Black or white preferred - adult sizes

BOYS

- Colorful boxers or boxer briefs - Men's sizes M - XL
- Socks - Black or white - short or tall - Nike preferred

EMPOWER A TEEN WITH THE GIFT OF CHOICE!

Want to make a difference in a teen's life? Consider donating gift cards to stores like Ross, Marshalls, TJ Maxx, or local malls. These cards give them the freedom to choose clothing that fits their style and needs. Your generosity helps them feel confident and prepared for the school year!

Please deliver any donations by
Monday, August 4th, 2025 to one
of our Drop-off Locations